

# AGRICULTURAL COOPERATIVES IN BRUNEI DARUSSALAM

MINISTRY OF PRIMARY RESOURCES AND TOURISM (MPRT)  
MINISTRY OF FINANCE AND ECONOMY (MOFE)



# Table of contents

**1**

**Agricultural Cooperatives In  
Brunei Darussalam**

**2**

**Co-operative Regulatory /  
Policy Framework**

**3**

**Institution and Database of  
Agricultural Cooperatives in  
Brunei Darussalam**

**4**

**National Programmes/Initiatives  
For Agriculture Cooperative  
Development In Brunei  
Darussalam**

**5**

**Response To The Impact Of Covid-  
19 Pandemic To Agricultural  
Cooperative Development In  
Brunei Darussalam**

**6**

**Use of Digital Technologies in  
Agricultural Cooperative  
Development In Brunei Darussalam**

**7**

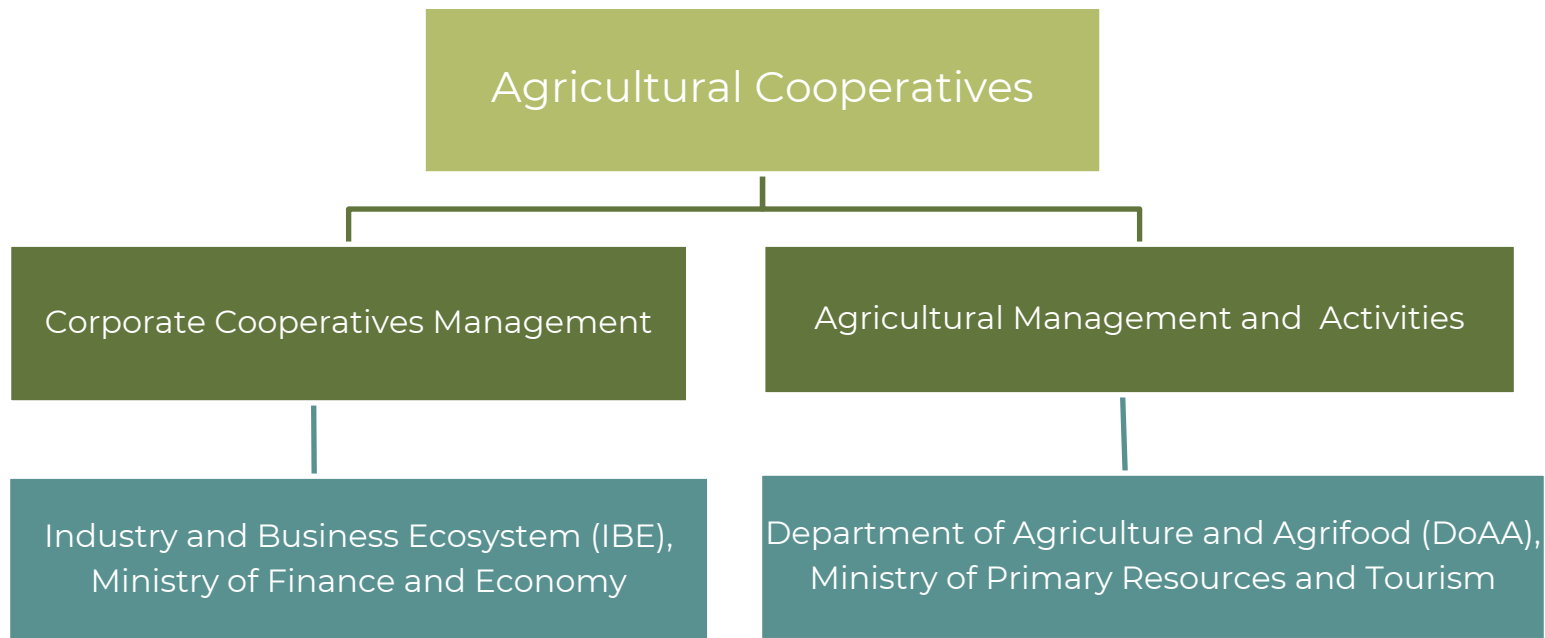
**Challenges in Agricultural  
Cooperative Development in  
Brunei Darussalam**

**8**

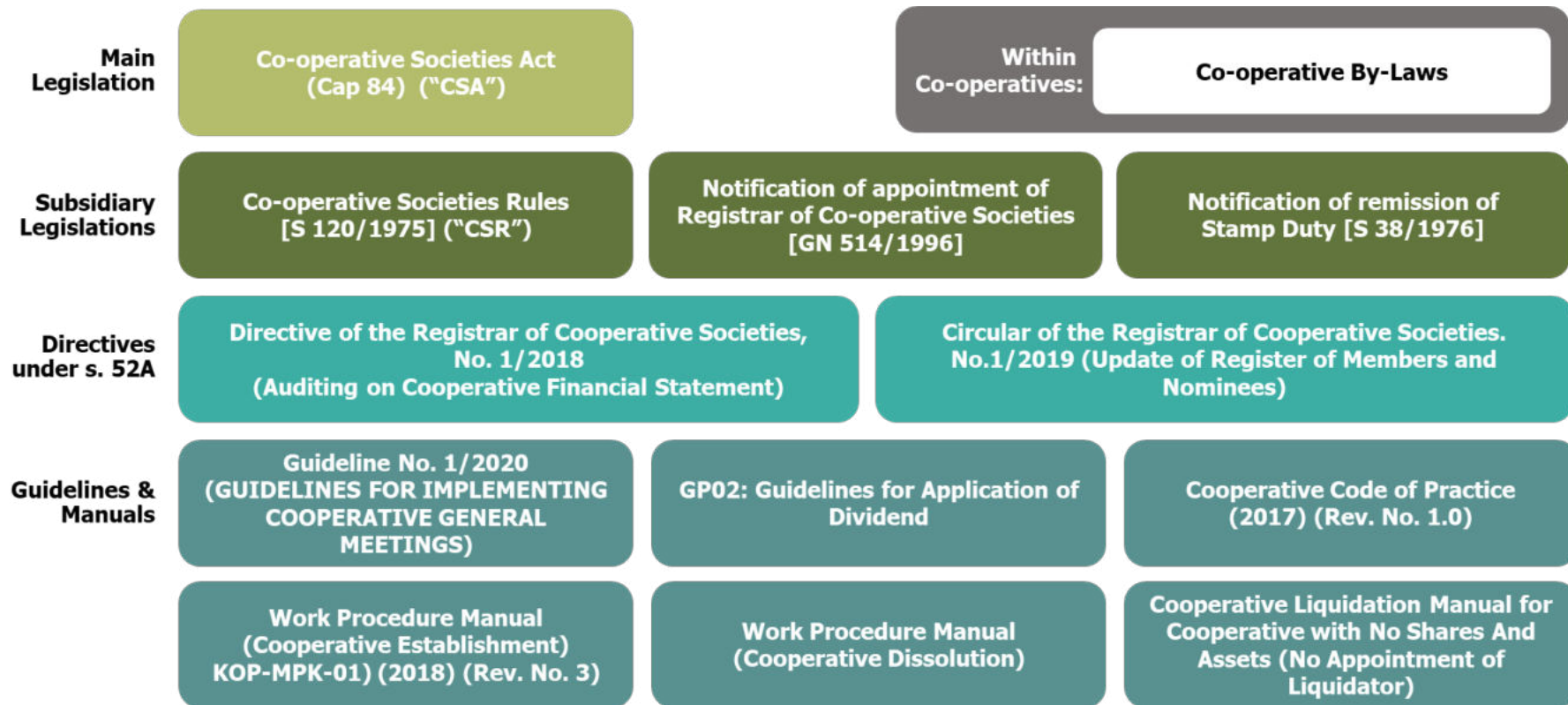
**Recommendation for Regional  
Cooperations**



# 1. AGRICULTURAL COOPERATIVES IN BRUNEI DARUSSALAM



## 2. CO-OPERATIVES REGULATORY/POLICY FRAMEWORK






### 3. INSTITUTION AND DATABASE OF AGRICULTURAL COOPERATIVES IN BRUNEI DARUSSALAM



District	Cooperative	Members	Shares Capital	Assets
Brunei-Muara	17	1057	\$428,709.59	\$433,319.85
Tutong	4	361	\$181,523.73	\$236,496.10
Belait	2	286	\$26,200.00	\$34,144.49
Temburong	1	98	\$3,720.00	-
Total	23	1,802	\$640,153.32	\$703,960.44

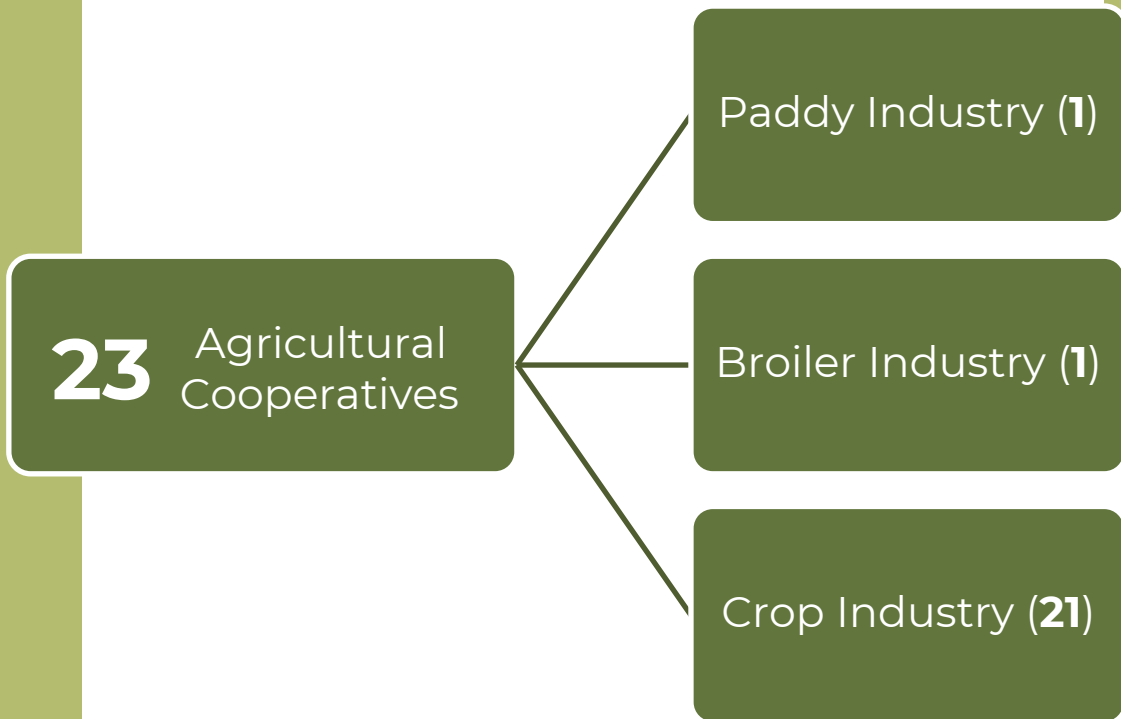
As of June 2022

### 3. INSTITUTION AND DATABASE OF AGRICULTURAL COOPERATIVES IN BRUNEI DARUSSALAM

Year		2016	*2022
	No. of Cooperative	24	23
	Members	1,771	1,802
	Shares Capital	\$654,053.68	\$640,153.32

*\*As of June 2022*

### 3. Institutions and database of the Agriculture Cooperatives in Brunei Darussalam.



- Farming activities - Agricultural Development Area (ADA) and Rural Agricultural Development Area (RADA) which are under the purview of Department of Agriculture and Agrifood (DoAA)
- Production data collection by DoAA

## 4. NATIONAL PROGRAMMES/INITIATIVES FOR AGRICULTURE COOPERATIVE DEVELOPMENT IN BRUNEI DARUSSALAM

Hari Peladang, Petani,  
Penternak Dan Nelayan  
(HPPPN) / Farmers Day

- **1st November**, every year
- Awards and recognition
- Expos and Exhibition



**2022 Theme: Empowering Value-Added Products,  
Drivers of the National Economy**



## 4. NATIONAL PROGRAMMES/INITIATIVES FOR AGRICULTURE COOPERATIVE DEVELOPMENT IN BRUNEI DARUSSALAM

Farm infrastructures improvement  
(farms roads and drainages)

Technical consultation/ advice on  
farm management

- Fertilisers application
- Propagation technique
- Pest & diseases management
- Post - harvest handling
- Composting
- High value crops

Capacity Building for Agricultural  
Cooperatives

- Cooperative management
- Cooperative financial management
- Cooperative strategic management
- Book-keeping & accounting
- Briefing on concepts of agricultural cooperatives



## 4. NATIONAL PROGRAMMES/INITIATIVES FOR AGRICULTURE COOPERATIVE DEVELOPMENT IN BRUNEI DARUSSALAM

### Market facilitation / networking

- Gerai Hujung Minggu Pasar Kitani / Weekend Farmer's Market
- HPPPN Expos



## 4. NATIONAL PROGRAMMES/INITIATIVES FOR AGRICULTURE COOPERATIVE DEVELOPMENT IN BRUNEI DARUSSALAM

### Development of Agricultural Crop Standard (Piawaian Brunei Darussalan)

- PBD 34:2018 - Guava
- PBD 35:2018 - Durian
- PBD 36:2018 - Chilli Peppers
- PBD 37:2018 - Papaya
- PBD 38:2021 - Sapodilla
- PBD 39:2021 - Cucumber
- PBD 40:2021 - Eggplant
- PBD 41:2021 - Melon
- PBD 41:2021 - Pumpkin



# 5. RESPONSE TO THE IMPACT OF COVID-19 PANDEMIC TO AGRICULTURE COOPERATIVE DEVELOPMENT IN BRUNEI DARUSSALAM

## Impact

Closure of markets and other selling outlets

## Response

'Buy Local Produce' Campaign (BLPC)

Promoting online selling via social media



An initiative to support our local farmers and growers in response to Covid-19



An initiative to support our local farmers and growers in response to Covid-19

### PRODUCT LIST

No.	Item	Price
1.	Banana Otel	\$3/kg
2.	Corn	\$6 (7pcs)
3.	Jambu Merah	\$6/kg
4.	Labu	\$2/kg
5.	Patola	\$1.50/kg
6.	Patola	\$2.00/kg
7.	Petai	\$2.50/kg
8.	Rambutan	\$1.50/kg
9.	Sayur Pucuk Labu	\$1.30/kg
10.	Terung	\$1/pack

Products are available at:



SUPPORT OUR LOCAL FARMERS

AGROBEE Market  
Unit 6 Block C,  
Berda Industrial Complex  
Bandar Seri Begawan,  
Negara Brunei Darussalam

Mon - Thurs: 7am - 5pm  
Fri: 7am - 12pm | 2pm - 5pm  
Sat: 8am - 4pm  
Sun: 8am - 5pm

For interested orders, please contact +673 717 0064





# 6. USE OF DIGITAL TECHNOLOGIES IN AGRICULTURAL COOPERATIVE DEVELOPMENT IN BRUNEI DARUSSALAMN



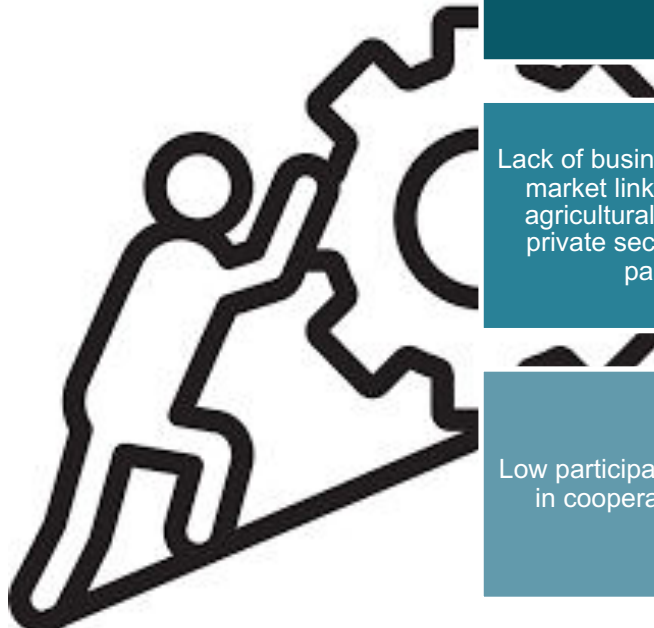
## InnovAero

Enhancing the future with UAV innovation

### PRECISION FARMING



## 7. CHALLENGES IN AGRICULTURE COOPERATIVE DEVELOPMENT



Inadequate legal and policy frameworks for agricultural cooperatives promotion

Many agricultural cooperatives are at small-scale with limited capacity in financial management, business planning, operation and marketing

The role of agricultural cooperatives is largely limited to certain activities in the supply chain that limit the income generation opportunities of cooperatives

Lack of business network and market linkages between agricultural cooperatives, private sectors and other partners

Lack of compliance to Cooperative Act and Rules

Lack of commitment to farm management - majority of members of agricultural cooperatives consists of elderly / still working

Low participation of members in cooperative activities

Lack of Managerial Talent

Absence of Good Governance

## 7. RECOMMENDATION FOR REGIONAL COOPERATIONS

- Capacity building/ Knowledge & Technology Transfer – focusing on sustainability, good corporate governance, innovation in agriculture;
- Sharing information on agricultural crops standards within ASEAN;
- Guideline on monitoring and evaluation related to agriculture cooperative (technical and management);
- Enhancing the market access, promotion and competitiveness within ASEAN agricultural cooperative;
- Deeper understand on the “ASEAN ROADMAP for Enhancing the Role of Agricultural Cooperatives In Agricultural Global Value Chains 2018-2025”

# Thank You

**Department of Agriculture and Agrifood (DoAA):**  
[upa.jpt@agriculture.gov.bn](mailto:upa.jpt@agriculture.gov.bn)

**Industry and Business Ecosystem (IBE):**  
[info.koperasi@mofe.gov.bn](mailto:info.koperasi@mofe.gov.bn)





# Focal Persons

## MINISTRY OF PRIMARY RESOURCES AND TOURISM (MPRT)



Siti Sundussiah Abdullah Sani  
[sundussiah.sani@agriculture.gov.bn](mailto:sundussiah.sani@agriculture.gov.bn)



Rabiatul Adawiyah PB Hj Abu Bakar  
[adawiyah.bakar@agriculture.gov.bn](mailto:adawiyah.bakar@agriculture.gov.bn)

## MINISTRY OF FINANCE AND ECONOMY (MOFE)



Pg Suridah Pg Hj Sulaiman  
[suridah.sulaiman@mofe.gov.bn](mailto:suridah.sulaiman@mofe.gov.bn)



Norhazamiah Hamid  
[norhazamiah.hamid@mofe.gov.bn](mailto:norhazamiah.hamid@mofe.gov.bn)



Hasrol Hanipiah Hj Hanipiah  
[hasrol.hanipiah@mofe.gov.bn](mailto:hasrol.hanipiah@mofe.gov.bn)